



# SAINT JOHN'S

Established 1874

Cullman Alabama

## EVANGELICAL PROTESTANT CHURCH

May 19, 2024 Liturgical Color: Red PENTECOST SUNDAY 9:00 (Sanctuary) 11:00 (Christ Hall)  
www.sjepc.com (Live stream available on YOUTUBE)

### CONGRATULATIONS SENIORS CLASS OF 2024



Pierce Bartle  
Cullman High School

University of Alabama Fall 2024



Willem Bolzle  
Cullman High School

Sanders Aviation Flight School 2024



Shana Lillian Guest  
Cullman High School  
Presidential Scholarship

UAB 2024  
Disability Studies & Rehabilitation Science  
Career: Pediatric Occupational Therapist



Belle Hendrix  
Cullman High School and WSC 2024 with General Science Degree



Luke Johnson  
Cullman High School

Auburn University  
Air Force ROTC 2024

#### College Graduation

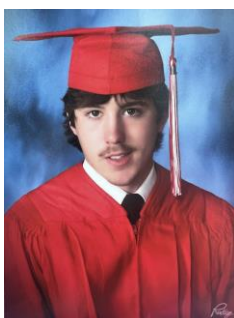


Carson Reid Laney  
Cullman High School and WSC with Associates Degree 2024



Maura "Lane" McLeod  
Cullman High School

Auburn University 2024



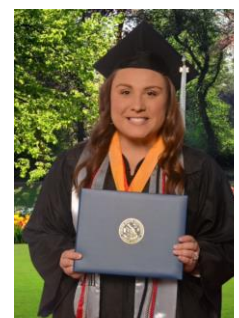
Hunter Moore  
Good Hope High School

US Marine Corps 2024



Noah Warren  
Cullman High School

WSC 2024 Business



Madelyn Guest  
April 27, 2024  
Athens State Suma Cum Laude  
Bachelor's of Science and Education Degree

**Welcome to St. John's. If this is your first time with us, know that we are so glad you're here!** Wherever you're at on your spiritual journey, we hope you are able to leave today having experienced the grace and truth of Jesus. Hopefully you've already met some of our welcome team and ushers but know that we are here to help you however we can. *Parents, for the kids, our nursery and kid's leaders will be excited to meet you!* Finally, if there's any way we can pray for you or help you connect to our church family, *please drop a welcome card in the offering basket or fill out an online prayer card.* Thank you for joining us today either virtually or in person!

\*\*\*\*\*

**As a church of grace and truth, St. John's is...**

- Rooted in the doctrines of the Protestant Reformation. We believe we are saved by grace through faith in Jesus, that the Bible is the rule for Christian life and faith, and that the Good News of Jesus should be proclaimed in word and deed.
- Sacrament Celebrating. We believe God ministers to the community of believers in unique and special ways through the gifts of Baptism and Holy Communion.
- Liturgically Oriented. We believe remembering the whole life of Christ is important for spiritual maturity. We follow the church calendar, celebrating seasons like Advent and Lent.
- Ecumenically Minded. In the context of our heritage, we believe all those who call upon Jesus as Lord and affirm the creeds of the church (eg the Apostles' Creed) will share in his eternal blessings and so we welcome all believers who join us to participate in worship and community life.

#### **STAY CONNECTED WITH US!!**

- **Sign up for notifications from the SJ Facebook page --(turn on notifications for SJ's)**
- **Worship Service available on ([www.sjpec.com](http://www.sjpec.com)) watch on You Tube**
- **Fill out a green connect card and drop in the offering plate when you visit us! We would love to meet you!**
- **Email:** make sure we have your current email in the office (256-734-0344)

\*\*\*\*\*

**NURSERY** ---Available for newborns up to 3 yrs. of age at both worship services and during Sunday School. Please see any usher or First Impression Team member with a yellow lanyard this morning and they will direct you to the nursery.

**VISITORS**---Thanks for visiting with us today! We would love the opportunity to sit down and meet with you! Please give us a call to set up an appointment with our Senior Pastor, Rev. John Richter @ 256-734-0344 if you have questions and would like to schedule an appointment to learn more about SJ's. You may also check our website [www.sjpec.com](http://www.sjpec.com) to learn more about St. John's.

**BAPTISM-** We rejoice in the sacrament of Christian Baptism today in the 9:00a service for Trace Gordon, grandson of Teena Milligan and nephew of Jesse Stefan.

**HOLY COMMUNION** –Today on Pentecost Sunday we observe the Sacrament of Holy Communion in both worship services. Dark red wine is served on the outer circles of the tray and clear grape juice is served on the inner circles of the tray. If you are a homebound member and can not be in attendance and would like to receive home communion, please contact the church office (256-734-0344) so a pastor can schedule a visit with you.

**TIFFANY'S JAZZ CD'S**—*Hot off the press and in the church office now!* Get your copy today of her new Jazz Album "*Sentimental Mood*" for only \$15.00 each. We also have a few copies of her previous album "*How Sweet the Sound*" for only \$5 each. Limited quantities of each album available.

**HOLIDAY CLOSING-** The church office will be closed on Monday May 27<sup>th</sup> in observance of Memorial Day.

**SUMMER OFFICE HOURS-** Summer office hours will begin on Tuesday May 28<sup>th</sup>. Hours will be: Monday -Thursday 8a-4:00p and Friday 8-12:00p

## SPECIAL 150<sup>TH</sup> MEMORBILLIA

- SJ's 150 PICTORIAL WINDOW DEVOTIONAL
- 5 x 7 SPECIAL 150 INK DRAWING OF THE CHURCH
- SJ's Ink Pen

### 150<sup>th</sup> SPECIAL EDITION ORNAMENT



Price:  
\$15.00 each

Limited  
Quantity  
Available

SJ's Items are available in the entry way of the Sanctuary, Christ Hall or the Church office.

***1 PER FAMILY PLEASE***

## 150<sup>TH</sup> CELEBRATION PHOTO BOOTH AWARDS

<b>Best Photo</b>	Steve Schwaiger and Cooper
<b>Funniest</b>	Jeremy And Benjamin Stidham
<b>Most Creative</b>	Tim and Donna Richter

Congratulations!!




Register Here  
or at [www.sjepc.com](http://www.sjepc.com)

# DAVID'S BIG BATTLE

SAT, JUNE 1ST  
9 AM - 1:30 PM

PreK3 - 2nd Grades

Music ● Crafts ● Bible Stories ● Fun  
Lunch ● Free tShirt

RISING  
1ST- 5TH  
GRADE



RSVP BY MAY  
30TH

JUNE 3RD-  
JULY 26TH

# LLPS SUMMER CAMP

7:15 AM-  
5:30PM

REGISTRATION  
FEES\$0

**ACTIVITIES**

MUSIC & CRAFTS  
GAMES & CHAPEL  
and more!

510 2ND AVENUE NE, CULLMAN

EMAIL-  
[LITTLELAMBSPRESCHOOL@SJEPC.COM](mailto:LITTLELAMBSPRESCHOOL@SJEPC.COM)

PHONE: 256-736-2290







# You Asked... St. John's 150th Merch Available NOW!

SHORT & LONG SLEEVE T-SHIRTS (ADULT S THRU 5XL)

YOUTH, INFANT & BABY SIZES

HATS - CUPS - STICKERS

AVAILABLE IN WHITE OR BLUE LOGO OPTIONS!



Visit our shop @  
<https://st-johns-cullman.myspreadshop.com>

So Convenient -  
Shop Online, Pay Online,  
Ships Direct to You!



## CONNECT WITH US

We would love to connect with you if you have been visiting SJ's for a while or if you would like to more information about us.  
Scan the QR Code or fill out a CONNECT Card online on the church website: [sjepc.com](http://sjepc.com).

## How's YOUR 150 In 2024?

*Every Member on a Mission*

As we celebrate our 150<sup>th</sup> Anniversary, we give thanks for what God has done in the past while looking forward to his continued faithfulness in the future.

Suggestion sheets are available in the Narthex and Christ Hall with some good examples of how you can practice spiritual disciplines.

**TEXT ANNOUNCEMENTS**--- Sign up today to receive the up to date last minute messages you might need to know about classes, worship services or events taking place at SJ's. To be sure you will not miss any important communication messages for you and your family, go ahead and sign up.  
Here you can also ask questions thru this number to the staff. **THIS IS NOT A GROUP CHAT**; no one else other than SJ's staff will be able to read your message.

### HERE'S HOW TO SIGN UP:

- Text SJEPC to 256-734-0344
- After you receive a response from us, text your name, so we will know who you are for contact information purposes.

**WALLACE STATE COMMUNITY COLLEGE BIBLE STUDY!**—If you are on campus Wednesdays at 2:30pm, join Nathan Williams in the Campus Ministries Room 100 in the Wellness Center. The club—named Ratio Christi—generally focuses on evangelism (sharing the faith) and apologetics (defending the faith). If you are a student, you are welcome to join! Invite friends. Contact Nathan if you have any questions ([nathan.williams@sjepc.com](mailto:nathan.williams@sjepc.com), 256-338-9210)

## **WEDNESDAY NIGHT CLASSES are a Wrap till fall !**

### **SIMPLIFY YOUR GIVING!**

Never worry about leaving your check at home or your tithe while you are away on vacation!  
*Consider a regular recurring gift or automated EFT to St. John's Church.*

**EASY SETUP** thru our church website:[www.sjepc.com](http://www.sjepc.com)

- Look under the “giving” tab on the top right side of the page
- Select “giving” and under the frequency section you have two options:  
one time gift **or** regular recurring gift
- Call Regina in the church office(256-734-0344) if you need assistance to set up.

### **PRAYER COLLECTIVE**

Are you receiving *SJ's Monday Prayer Collective* email? If not, and you would like to be included on the list, please email: [karen.hassell@sjepc.com](mailto:karen.hassell@sjepc.com) or call the church office (256-734-0344) with your email address.

**A CARING CHURCH?** At St. John's we long to be a caring church. Most churches share this desire, but to actually be a caring church requires all of our participation in member-to-member care. First and foremost, it begins in the friendships and relationships you establish with your brothers and sisters in Christ. A great way—in fact *the primary* way—to connect to caring, Christ-centered friendships at SJs is to get involved with one of our many groups. Each of our groups are encouraged to nurture biblical member-to-member care for one another. And, secondly, caring churches are intentional churches. Care doesn't just happen. It takes purposeful effort! Thus, our hope is that our groups will be intentional in listening to, looking out for, and praying with one another. Take time in your groups to develop a process to care for one another.

We also want to offer good pastoral care during the more trying seasons of life. By God's grace, our church has the privilege of shepherding several hundred people who look to SJs as their church “home.” Even though each of our services may feel relatively small or medium-sized, the sum total of our congregation is quite large. This simply means that we have to think wisely, biblically, and creatively on how to care for the spiritual well-being of a congregation this size. This, too, takes intentionality both on your part and the part of our staff.

We have recognized that we are best at remembering specifics when prayer requests are written down. So, we want to make sure you have easy channels to ask for prayer and care. You'll find prayer cards in the sanctuary and Christ Hall and, of course, calls, emails, and texts are best to set up appointments. We'd love to see our care and prayer ministry grow and even explore new avenues. If that's a part of your heartbeat, we'd like to hear how God is prompting you to join in this ministry. ~~Grace and Truth, Reverend John



**FOLLOW US  
ON SOCIAL MEDIA**  
Instagram and Facebook -  
@sjyouthlive  
Snapchat – sjstudents

**Text**  
"@sjstudent" to  
81010 to begin  
receiving  
updates!

**Sunday School**  
10:10-10:50 am Youth Center

Trent Dodson, Student Pastor  
[Trent.dodson@sjepc.com](mailto:Trent.dodson@sjepc.com)  
Cell: 205-910-2741

**STUDENTS AND PARENTS**  
Get info and updates on all  
things student ministry  
sent to you in a text message!

**THIS WEEK:**

- Mon. May 20**  
5:30p RWO Graduation(RB)
- Tues. May 21**  
7a Men's Breakfast and Bible Study (CH)  
9a PLARN (HH)  
6p NaraNon- (RB)
- Wed. May 22**  
10a Chapel
- Thurs. May 23**  
7:30am 55A Roadtrip to Belle Meade  
12:00p Rotary Meeting and Lunch  
12:00p Hank's Group (UR)

**Our Faithful Giving**

**Offerings:** 5-5-24 \$213,794.00  
5-12-24 \$ 22,773.81  
**Mission 150 to Date:** \$617,130.87  
**Gifts:**

**Mission 150**  
**Memory of Bob Polancich** by Richard and Betty Gibbs;  
**Honor of Wes Warren** by Shannon and Nan Green

**55Alive**  
**Memory of Pam Key** by Richard and Betty Gibbs

## 6 Ways to Give:

- \* **church website** ([www.sjepc.com](http://www.sjepc.com)) and click the giving tab
- \***Mail gifts:** St. John's Church, 512 2<sup>nd</sup> Ave SE, Cullman Al 35055
- \***"Text to Give"** text **84321**---follow the prompt
- \***complete an authorization** form for Visa, MasterCard, Discover or debit card
- \***call the office before you come** and we can come out to your car
- \***Put in the offering plate** during the service



## CONTRIBUTIONS

When making contributions to any fund other than the general fund (Mission 150!, Music Fund, or Youth Fund, Women's Guild / Whit's Place) please write a separate check made specifically to that fund.

### IRA Qualified Charitable Distribution

Anyone 70.5 years of age or older can give up to \$100,000 as a tax-free gift, in the form of a QCD, from their traditional IRA account. Contact your IRA custodian or tax preparer for more information.

## Ages 18 and older- Welcome!!

Sunday mornings

@ *Reaching Higher Too!*

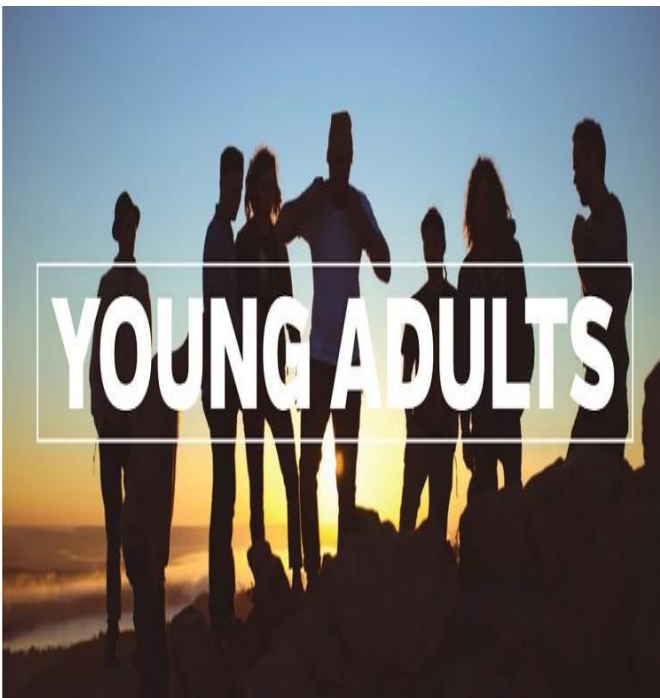
Basement of the Ruehl Building

10:10-10:50a

*Great place to connect!!*

### College Students Returning for the Summer!

Make sure to reach out to Cori Manord and Blake Tetro about their Young Adult Sunday School Class. They meet in the Basement of the Ruehl Building from 10:10-10:50am. We would love for you to join! Contact Cori (256-590-7603) or Blake (256-595-5259) if you have any questions.



## SJ's Adult & Young Adult Sunday School Class Information and Locations

Ask any greeter (wearing a yellow lanyard) or staff member Sunday morning and they will be happy to help you find a class location.

**1-Eddie McGriff's Class**– "Digging into books of the Bible a chapter at a time. All are welcome!"

**Location:** Heritage Hall

**2-Wes Warren's Kingdom Builders**– "Discussion-based studies that draw us into the truth of Scripture. All are welcome!"

**Location:** Ruehl Building Main Floor (South Side)

**3-Melanie Townson's Reaching Higher**– "Our main objective in studying the Bible is to develop an understanding of how to model our lives after the directions of Christ. We gather together to encourage and foster relationships, and we also like to have fun and fellowship with one another

**Location:** 2<sup>nd</sup> Floor Ruehl Building

**4-Reaching Higher Too**– **Leaders:** Cori Manord, Blake Tetro; "Young Adult class for ages 18 – and older with a focus on developing relationships with each other and with God."

**Location:** Basement of the Ruehl Building

**5-Dennon Compton's Upper Room**– "The Book of 1 Peter"

**Location:** Upper room, next to elevator and Tween room. Take new elevator upstairs.

**Cullman NAR-ANON Group Meetings**--The NAR-ANON family group meetings are a worldwide fellowship for those affected by someone else's Addiction. We offer Help by sharing our experiences, strength, and hope. We carry the message of Hope by letting others know that they are not alone by practicing the 12 Steps of NAR-ANON and changing our own Attitudes. *We Respect Your Anonymity*. Our program is not a Religious one, but a Spiritual way of Life. Meetings will be held at The Ruehl Building (family life center of St John's Church) Tuesday evenings @ 6:00 pm. Contact Don or Nancy McKenzie 256-736-3327 or 256-736-3470 for more information.

**Cullman AA Group Meetings** –If you or someone you know might need to attend, group meetings are held at: 1519 St. Joseph St. NW, Cullman. Additional meetings are held at Grace Episcopal Church on Monday and Thursday at 7:00pm; and also at Sacred Heart Church on Wednesday at 7:00 pm. Contact: Nancy Clemmons Moore 256-347-8543 or 256-735-1717

**SJ's PRAYER LIST**

*All prayer requests are very important to us. To make sure we can give your request proper attention, please be sure to communicate with us in writing requests on prayer request cards. You may also email prayer requests to: karen.hassell@sjepc.com.* Sunday Mornings and Wednesday evenings are busy times for everyone and prayer requests can be accidentally lost in conversations. Thank you for helping us with this important matter.

- Our prayer list is renewed the first of each month.
- Please fill out a new prayer card with your individual requests each month and indicate clearly if you would like it public knowledge—*otherwise it will remain on the Pastor's Prayer list only.*
- Online prayer cards are available on the church website: **www.sjepc.com** or you may email your prayer request in or drop a note in the offering baskets.
- *As your prayer request needs to be removed from the list, please let us know.*
  - Prayer lists are published as space allows.

**CHURCH MEMBERS:**

Johnnie Miller; Judy Dean, Rachel Riley; Anna McGriff, Shane Guest; Tamara White, JP White; Gail Wallace; Bob Uzzell; Raymond Gladney

**EXTENDED FAMILY AND FRIENDS:**

Kristen Hawsey Smith; Betty Walker; Lindsay Hickman; Lisa Sharpton; Susan McClendon Patrick; Julie Blaize; Porter Lynn Phillips; Terry Parker; Ann Buster Payne; Michael Johnston; Betty Barrett; Michael Clemmons; Brenda Landers; Cindy Hawkins; Jabron (TJ) Luker; Lauren Rasbury Horstman; Johnny Gray; Ruby Kate Bailey and family; Rick Hebson; Sharon Morgan

**Military Addresses**

Praying for: Cpt. Chris Hester, Chaplain—Maryland; Nicholas Sargent, US Marines; Staff Sergeant Josh Ryan, USAF, Eglin AFB; Pvt. First Class 3 Caleb Wood, Middle East; Lt. Scott Waitley, US Navy; Lt. John Riley, Ft Benning, Ga; Jase Goolsby, US Navy-Norfolk; Ben Turner, US Navy-Norfolk

**Assisted Living:**

**Folsom Center:** Doris Keathley

**Woodland Village:** Bea Mack

**Westminster**—Jo Webb



## 2024 CHURCH COUNCIL

### Officers:

President: Matt Page; Vice President: Deanna Little; Secretary: Corrie Antler Bradfield; Treasurer: Jamie Laney

### Members:

Pam Farmer, Chad Knop, Stan Sandlin, Kathy Schuman, Jeremy Stidham, Matt Townson, Jacob Waldrop, Malinda Windham

## SJ's STAFF CONTACT INFORMATION:

**Reverend Doctor John Richter**, Sr. Pastor  
[john.richter@sjepc.com](mailto:john.richter@sjepc.com)

**Nathan Williams**, Associate Minister  
[nathan.williams@sjepc.com](mailto:nathan.williams@sjepc.com)

**Trent Dodson**, Student Pastor  
[trent.dodson@sjepc.com](mailto:trent.dodson@sjepc.com)

**Tiffany Richter**, Director of Music Ministries  
[tiffany.richter@sjepc.com](mailto:tiffany.richter@sjepc.com)

**Stephanie Jowers**, Director Children's Ministries  
[stephjowers96@gmail.com](mailto:stephjowers96@gmail.com)

**Tina White**, Director Little Lambs Preschool  
[tina.white@sjepc.com](mailto:tina.white@sjepc.com) or  
[littlelambspreschool@sjepc.com](mailto:littlelambspreschool@sjepc.com)

**Jane Brannon**, LLS Office Assistant  
[jane.brannon@sjepc.com](mailto:jane.brannon@sjepc.com)

**Regina Baker**, Financial Secretary  
[regina.baker@sjepc.com](mailto:regina.baker@sjepc.com)

**Karen Hassell**, Administrative Assistant,  
Facility Coordinator; 55Alive Sr. Adults  
[karen.hassell@sjepc.com](mailto:karen.hassell@sjepc.com)

**St. John's  
Evangelical Protestant Church**  
512 2<sup>nd</sup> Ave SE  
Cullman, Al  
35055

### Church Office Hours

**Monday –Thursday  
8am-5pm**

**Friday  
8:00am-12:00pm**

**Phone: 256-734-0344**

**[www.sjepc.com](http://www.sjepc.com)**

look under the event tab to sign up for  
all up-coming activities and events

### CHURCHWIDE EMAILS

*email:* (karen.hassell@sjepc.com) to sign up  
for receiving emails from the church so you  
will not miss out on important information.

## SAFE SANCTUARIES

Reducing the Risk of Abuse in the Church for Children and Youth



Always keep your eyes open to something that looks unusual to you and report it to an usher or staff member immediately.

- ❖ Remember do not leave your valuables in your vehicles.
- ❖ Do not leave your purses, wallets, phones, laptops, weapons in plain sight.

*ALL VOLUNTEERS AND STAFF ARE BACKGROUND CHECKED PRIOR TO BEING INVOLVED WITH OUR CHILDREN, YOUTH OR VULNERABLE ADULTS.*

### Safe Sanctuary Steering Committee:

Stan Sandlin, Tricia Dille, Billy Jackson, Kenny Culpepper, Karen Hassell

We are a safe sanctuary campus.

Local crisis line: 256-734-6100 if you need help or 911

Look for Ushers, First Impression Team Members and Staff wearing Yellow Lanyards to assist you with any questions.

### SJ's Weekly Sunday Worship Schedule

**9:00 – Traditional Worship in the Sanctuary** without weekly communion

**10:10-10:50 – Sunday School** – classes for children, youth and adult

**11:00 – Modern Worship in Christ Hall** with the addition of weekly communion

Thank you for visiting our church  
website!

Download the Church Center Ap today!  
Registration for events or meals is a breeze with the ap!!







