



SAINT JOHN'S

Established 1874

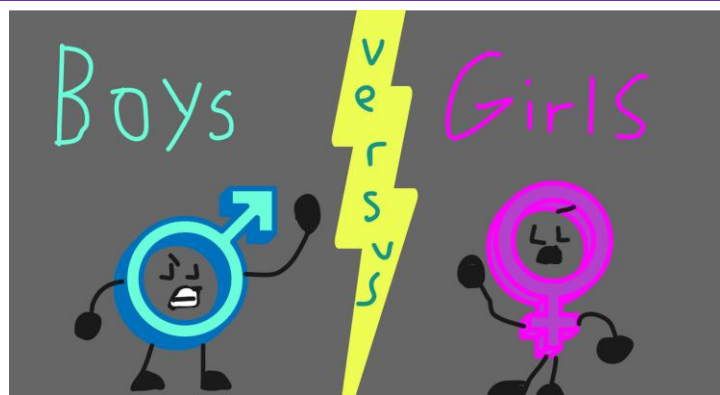
Cullman Alabama

EVANGELICAL PROTESTANT CHURCH

Sept. 8, 2024 Liturgical Color: Green

9:00 (Sanctuary) 11:00 (Christ Hall)

www.sjepc.com (Live stream available on YOUTUBE)



SJ Students

grades 6-12 Contest

benefiting

Curt's Closet

Who will bring in the greatest amount of weight in donations?

- Clothing (new or if gently used, must be clean) or
- New school supplies

Collected items will be delivered on the SJ's Youth Serve Night at Curt's Closet *Wednesday Sept. 25th*.

The congregation is invited to be a part of our contest and outreach.

Please drop all items by the church office and mark them for your favorite team "*GIRL TEAM*" or "*BOY TEAM*".

Thank you in advance!!



TRUNKS NEEDED!
TEXT 256-962-0211
TO SIGN UP &
SELECT THEME!

CANDY WILL BE
PROVIDED!

Welcome to St. John's. If this is your first time with us, know that we are so glad you're here! Wherever you're at on your spiritual journey, we hope you are able to leave today having experienced the grace and truth of Jesus. Hopefully you've already met some of our welcome team and ushers but know that we are here to help you however we can. *Parents, for the kids, our nursery and kid's leaders will be excited to meet you!* Finally, if there's any way we can pray for you or help you connect to our church family, *please drop a welcome card in the offering basket or fill out an online prayer card.* Thank you for joining us today either virtually or in person!

As a church of grace and truth, St. John's is...

- Rooted in the doctrines of the Protestant Reformation. We believe we are saved by grace through faith in Jesus, that the Bible is the rule for Christian life and faith, and that the Good News of Jesus should be proclaimed in word and deed.
- Sacrament Celebrating. We believe God ministers to the community of believers in unique and special ways through the gifts of Baptism and Holy Communion.
- Liturgically Oriented. We believe remembering the whole life of Christ is important for spiritual maturity. We follow the church calendar, celebrating seasons like Advent and Lent.
- Ecumenically Minded. In the context of our heritage, we believe all those who call upon Jesus as Lord and affirm the creeds of the church (eg the Apostles' Creed) will share in his eternal blessings and so we welcome all believers who join us to participate in worship and community life.

STAY CONNECTED WITH US!!

- **Sign up for notifications from the SJ Facebook page --(turn on notifications for SJ's)**
- **Worship Service available on (www.sjepc.com) watch on You Tube**
- **Fill out a green connect card and drop in the offering plate when you visit us! We would love to meet you!**
- **Email:** make sure we have your current email in the office (256-734-0344)

NURSERY ---Available for newborns up to 3 yrs. of age at both worship services and during Sunday School. Please see any usher or First Impression Team member with a yellow lanyard this morning and they will direct you to the nursery.

VISITORS---Thanks for visiting with us today! We would love the opportunity to sit down and meet with you! Please give us a call to set up an appointment with our Senior Pastor, Rev. John Richter @ 256-734-0344 if you have questions and would like to schedule an appointment to learn more about SJ's. You may also check our website www.sjepc.com to learn more about St. John's.

SYMPATHY- Christian love and sympathy is extended to the family of Mr. Wayne Williams, husband of Becky. A funeral service was held September 4, 2024 at Cullman Heritage Funeral Home with Rev. John Richter officiating.

2025 BUDGET REQUESTS—Please submit all 2025 budget requests in writing to Regina Baker by September 15th. Email: regina.baker@sjepc.com

SJ STUDENT'S SERVE NIGHT

Wed. Sept. 25th at Curt's Closet 5:30-7:30p. Food provided.
Please drop off and pick up students at Curt's Closet.
Q's? contact Carter, Madelyn or Blake.

Wallace State Community College Bible Study!--During the Fall and Spring semesters, Nathan Williams leads a Bible Study on Wallace's campus on Wednesdays at 2:30pm. They meet in the Student Center Room 107 (next to the Betty Leeth Haynes Theatre). The club—named Ratio Christi—generally focuses on evangelism (sharing the faith) and apologetics (defending the faith). If you are a student, you are welcome to join! Invite friends. Contact Nathan if you have any questions (nathan.williams@sjepc.com, 256-338-9210).

Fall Sermon Series-Heidelberg Catechism

Rev. John's fall sermon series will be based from the Heidelberg Catechism.
If you would like a copy of the Catechism to read along with, please let the church office know
(256-734-0344).

COMMUNICATION---COMMUNICATION---COMMUNICATION !!!

In today's world communication is so important. Everyone is so busy and running in so many directions with time deadlines to be met. Many factors, including weather, play a part in where you will be. As we all gear towards fall, what better way to stay in touch with important events, class and meal information from your church????

SJ's TEXT ANNOUNCEMENTS will help you not miss any important communication for you and your family!
THIS IS NOT A GROUP CHAT. Only SJ's staff will be able to see your reply.

HERE'S HOW TO SIGN UP:

- Text SJEPC to 256-734-0344
- After you receive a response from us, text your name, so we will know who you are for contact information purposes.
- It takes less than 30 seconds to sign up!



Connect QR Code

We would love to connect with you if you have been visiting SJ's for a while or if you would like to more information about us. Fill out a CONNECT Card (found in the pew rack), online (sjepec.com.).



3 ADULT FALL WEDNESDAY NIGHT CLASSES

(August 14th – October 23rd--11 weeks)

- **Lectio Divina: Praying with Sacred Scripture**

Teacher: Rev. John Richter Location: Sanctuary

Is your soul weary? Do you need spiritual rest and encouragement? Come pray with Rev. John Richter through the Word of God. All are welcome.

- **Women of the Bible (Women's Class)** Teachers: Jennifer Hill and Teena Milligan

Location: Ruehl Building Main Floor

*Continuing from the Spring, this women's class will explore the lives of 16 biblical women based on the book *The Women of the Bible Speak* by Shannon Bream. Each class session is meant to stand alone, so if you missed the Spring class or if you miss a week in the Fall, that's okay! Come gain a deeper understanding of the diverse roles women played in biblical history and how their stories continue to inspire and resonate with women today. Snacks and all materials provided.*

- **1 & 2 Timothy: Growing in Faith** Teachers: Wade Warren, Matt Page, Nate Williams

Location: Heritage Hall

We all need a "Paul" in our life, helping us to grow in our faith. We also need to be a "Paul" to those around us, helping others in their relationship with God. By reading through his letters to Timothy, we will discuss what it means to have godly character, love God and one another, and seek to be faithful as we navigate trials. Let's dive into Scripture. All are welcome.

Sunday School Class Lineup

- College and Young Adult Class
(Cori Manord and Blate Tetro)
- ***New*** • Young Professionals and Young Couples
(Nate Williams)
- Reaching Higher
(Matt and Melanie Townson, Wade Warren)
- Kingdom Builders
(Wes Warren)
- Eddie McGriff's Sunday School Class
(Eddie McGriff)
- Upper Room
(Dennon Compton)

For information on these classes (locations, topics, etc.), visit our website (sjepc.com), look under "Ministries," and click on "Sunday School Classes."

Or use this QR code:



How's YOUR 150 In 2024?

Every Member on a Mission

As we celebrate our 150th Anniversary, we give thanks for what God has done in the past while looking forward to his continued faithfulness in the future.

Suggestion sheets are available in the Narthex and Christ Hall with some good examples of how you can practice spiritual disciplines.

PRAYER COLLECTIVE

Are you receiving *SJ's Monday Prayer Collective* email? If not, and you would like to be included on the list, please email: karen.hassell@sjepc.com or call the church office (256-734-0344) with your email address.

SIMPLIFY YOUR GIVING!

Never worry about leaving your check at home or your tithe while you are away on vacation!

Consider a regular recurring gift or automated EFT to St. John's Church.

EASY SETUP thru our church website: www.sjepc.com

- Look under the "giving" tab on the top right side of the page
- Select "giving" and under the frequency section you have two options:
one time gift **or** regular recurring gift
- Call Regina in the church office (256-734-0344) if you need assistance to set up.

A CARING CHURCH? At St. John's we long to be a caring church. Most churches share this desire, but to actually be a caring church requires all of our participation in member-to-member care. First and foremost, it begins in the friendships and relationships you establish with your brothers and sisters in Christ. A great way—in fact *the primary* way—to connect to caring, Christ-centered friendships at SJs is to get involved with one of our many groups. Each of our groups are encouraged to nurture biblical member-to-member care for one another. And, secondly, caring churches are intentional churches. Care doesn't just happen. It takes purposeful effort! Thus, our hope is that our groups will be intentional in listening to, looking out for, and praying with one another. Take time in your groups to develop a process to care for one another.

We also want to offer good pastoral care during the more trying seasons of life. By God's grace, our church has the privilege of shepherding several hundred people who look to SJs as their church "home." Even though each of our services may feel relatively small or medium-sized, the sum total of our congregation is quite large. This simply means that we have to think wisely, biblically, and creatively on how to care for the spiritual well-being of a congregation this size. This, too, takes intentionality both on your part and the part of our staff.

We have recognized that we are best at remembering specifics when prayer requests are written down. So, we want to make sure you have easy channels to ask for prayer and care. You'll find prayer cards in the sanctuary and Christ Hall and, of course, calls, emails, and texts are best to set up appointments. We'd love to see our care and prayer ministry grow and even explore new avenues. If that's a part of your heartbeat, we'd like to hear how God is prompting you to join in this ministry. ~~Grace and Truth, Reverend John



<p>FOLLOW US ON SOCIAL MEDIA Instagram @ sjstudents</p>	<p>Leaders: Blake Tetro Madelyn Guest Carter Guest</p>	<p>Sunday School 10:10-10:50 am Youth Center</p>
--	---	---

THIS WEEK:

- Mon. Sept. 9**
5:30pm
- Tues. Sept. 10**
7a Men's Breakfast (CH)
9a PLARN (HH)
6p NaraNon- (RB)
- Wed. Sept. 11**
10a Chapel
6:00p-7:00p Classes, Youth, Kids
- Thurs. Sept. 12**
12:00p Cullman Bar Association Mtg and Lunch (HH)
12:00p Rotary Meeting and Lunch
12:00p Hank's Group (UR)

Our Faithful Giving

Offerings: 9-1 \$ 24,666.21

General Fund:

Memory of Wayne Williams by Donnie and Donna Maner; Fuller and Jan Smith; Steve and Angie Glasscock; Kenny and Dinae Culpepper; William and Fredricka Snipes; Rita Bailey, LaRue Brock

Mission 150

Memory of Jan Witte, Ray Bolzle, Jacob Knight, Pam Hagan, Joan Smith, Tamara White by Terry and Helen Kent

Memory of Wayne Williams by Bill and Ellesha Whisenhunt; Terry and Helen Kent

**This section is printed on the weekly Order of Worship as space permits.

Mission 150! A Legacy of God's Faithfulness and Generosity.

6 Ways to Give:

- * **church website** (www.sjepc.com) and click the giving tab
- ***Mail gifts:** St. John's Church, 512 2nd Ave SE, Cullman Al 35055
- ***"Text to Give"** text **84321**---follow the prompt
- ***complete an authorization** form for Visa, MasterCard, Discover or debit card
- ***call the office before you come** and we can come out to your car
- ***Put in the offering plate** during the service

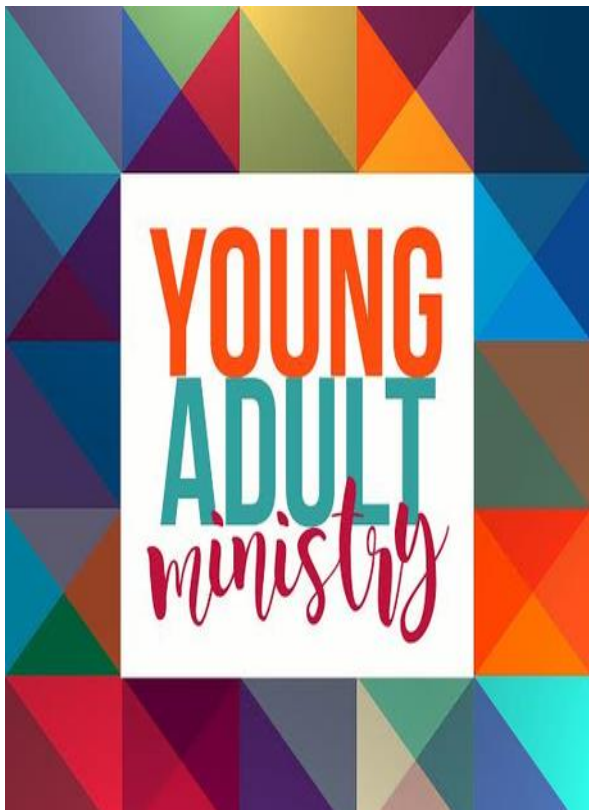


CONTRIBUTIONS

When making contributions to any fund other than the general fund (Mission 150!, Music Fund, or Youth Fund, Women's Guild / Whit's Place) please write a separate check made specifically to that fund.

IRA Qualified Charitable Distribution

Anyone 70.5 years of age or older can give up to \$100,000 as a tax-free gift, in the form of a QCD, from their traditional IRA account. Contact your IRA custodian or tax preparer for more information.



Sunday mornings

ONWARD *is the Class for you!*

Ages 18 + reach out to Cori Manord and Blake Tetro about their Young Adult Sunday School Class.

We would love for you to join! Contact Cori (256-590-7603) or Blake (256-595-5259) if you have any questions.

Basement of the Ruehl Building
10:10-10:50a

Cullman NAR-ANON Group Meetings

The NAR-ANON family group meetings are a worldwide fellowship for those affected by someone else's addiction. We offer Help by sharing our experiences, strength, and hope. We carry the message of Hope by letting others know that they are not alone by practicing the 12 Steps of NAR-ANON and changing our own Attitudes. *We Respect Your Anonymity.* Our program is not a Religious one, but a Spiritual way of Life. Meetings will be held at The Ruehl Building (family life center of St John's Church) Tuesday evenings @ 6:00 pm. Contact Don or Nancy McKenzie 256-736-3327 or 256-736-3470 for more information.

Cullman AA Group Meetings

If you or someone you know is struggling with alcohol and needs help or to attend group meetings, they are held at: 1519 St. Joseph St. NW, Cullman. Additional meetings are held at Grace Episcopal Church on Monday and Thursday at 7:00pm; and at Sacred Heart Church on Wednesday at 7:00 pm. Contact: Nancy Clemmons Moore 256-347-8543 or 256-735-1717 for more information

SJ's Adult & Young Adult Sunday School Class Information and Locations

Ask any greeter (wearing a yellow lanyard) or staff member Sunday morning and they will be happy to help you find a class location.

1-Eddie McGriff's Class— All are welcome to our Sunday School class! Our group is generally composed of older adults, and we average around 15-25 people.

Leader: Eddie McGriff

Current Series: John MacArthur's "12 Ordinary Men"

Location: Heritage Hall

2-Kingdom Builders—Discussion-based studies that draw us into the truth of Scripture. All are welcome! We average around 40 people. Our class is inter-generational, from the younger to the more seasoned.

All are welcome!"

Leader: Wes Warren

Location: Ruehl Building Main Floor (South Side)

3-Reaching Higher—Welcome! We would love for you to come visit and check our group out. We tend to be composed of middle-age adults, with both married couples and singles. We average anywhere from 10-25 people.

Leaders: Matt and Melanie Townson, Wade Warren

Current Series: "No Other Gods" by Kelly Minter

Location: 2nd Floor Ruehl Building

4-Onward— College and Young Adult Sunday School class for ages 18 through upper 20s.

Leaders: Cori Manord, Blake Tetro

Current Series: The Sermon on the Mount

Location: Basement of the Ruehl Building

5-Upper Room--All are welcome to our Sunday School class! Our group is generally composed of older adults, and we average around 6-10 people.

Leader: Dennon Compton

Current Series: Luke

Location: Upper room, next to elevator and Tween room. Take the new elevator upstairs

6- Young Professionals and Young Couples

Leader: Nate Williams

Current Series:

Location: 2nd Floor- southside of the Ruehl Building

SJ's PRAYER LIST

All prayer requests are very important to us. To make sure we can give your request proper attention, please be sure to communicate with us in writing requests on prayer request cards. You may also email prayer requests to: karen.hassell@sjepc.com. Sunday Mornings and Wednesday evenings are busy times for everyone and prayer requests can be accidentally lost in conversations. Thank you for helping us with this important matter.

- Our prayer list is renewed the first of each month.
- Please fill out a new prayer card with your individual requests each month and indicate clearly if you would like it public knowledge—*otherwise it will remain on the Pastor's Prayer list only.*
- Online prayer cards are available on the church website: **www.sjepc.com** or you may email your prayer request in or drop a note in the offering baskets.
- ***As your prayer request needs to be removed from the list, please let us know.***
 - Prayer lists are published as space allows.

CHURCH MEMBERS:

Johnnie Miller; Judy Dean, Rachel Riley; Anna McGriff, Shane Guest; JP White; Gail Wallace; Bob Uzzell; Raymond Gladney

EXTENDED FAMILY AND FRIENDS:

Kristen Hawsey Smith; Betty Walker; Lindsay Hickman; Lisa Sharpton; Susan McClendon Patrick; Julie Blaize; Porter Lynn Phillips; Terry Parker; Ann Buster Payne; Betty Barrett; Michael Clemmons; Brenda Landers; Jabron (TJ) Luker; Lauren Rasbury Horstman; Ruby Kate Bailey and family; Rick Hebson; Sharon Morgan; Megan Carpenter; Garlan Gudger; Alan Miner; Brian Goodwin; Becky Loyd (mother of Misty Shannon)

Military Addresses

Praying for: Cpt. Chris Hester, Chaplain—Maryland; Nicholas Sargent, US Marines; Staff Sergeant Josh Ryan, USAF, Eglin AFB; Pvt. First Class 3 Caleb Wood, Mississippi National Guard; Lt. Scott Waitley, US Navy; Lt. John Riley, Ft Benning, Ga; Jase Goolsby, US Navy-Norfolk; Ben Turner, US Navy- Norfolk

Assisted Living:

Folsom Center: Doris Keathley

Woodland Village: Bea Mack

Westminster—Jo Webb



You Asked...
St. John's 150th Merch
Available NOW!

SHORT & LONG SLEEVE T-SHIRTS (ADULT S THRU 5XL)

YOUTH, INFANT & BABY SIZES

HATS - CUPS - STICKERS

AVAILABLE IN WHITE OR BLUE LOGO OPTIONS!



Visit our shop @
<https://st-johns-cullman.myspreadshop.com>



So Convenient -
 Shop Online, Pay Online,
 Ships Direct to You!

2024 CHURCH COUNCIL

Officers:

President: Matt Page; Vice President: Deanna Little; Secretary: Corrie Antler Bradfield; Treasurer: Jamie Laney

Members:

Pam Farmer, Chad Knop, Stan Sandlin, Kathy Schuman, Jeremy Stidham, Matt Townson, Jacob Waldrop, Malinda Windham

SJ's STAFF CONTACT INFORMATION:

Reverend Doctor John Richter, Sr. Pastor

john.richter@sjepc.com

Nathan Williams, Associate Minister

nathan.williams@sjepc.com

Tiffany Richter, Director of Music Ministries

tiffany.richter@sjepc.com

Stephanie Jowers, Director Children's Ministries

stephjowers96@gmail.com

Tiffanie McBrayer, Director Little Lambs Preschool

tiffanie.mcbrayer@sjepc.com or

littlelambspreschool@sjepc.com

Carter Guest, Live Stream; Youth Ministries

carter.guest@sjepc.com

Madelyn Guest, Youth Ministries

madelyn.guest@sjepc.com

Blake Tetro, Youth Ministries

blake.tetro@sjepc.com

Jane Brannon, LLPS Office Assistant

jane.brannon@sjepc.com

Regina Baker, Financial Secretary

regina.baker@sjepc.com

Karen Hassell, Administrative Assistant,
Facility Coordinator; 55Alive Sr. Adults

karen.hassell@sjepc.com

St. John's
Evangelical Protestant Church
512 2nd Ave SE
Cullman, Al
35055

Church Office Hours

Monday –Thursday
8am-5pm

Friday
8:00am-12:00pm

Phone: 256-734-0344

www.sjepc.com

look under the event tab to sign up for
all up-coming activities and events

CHURCHWIDE EMAILS

email: (karen.hassell@sjepc.com) to sign up
for receiving emails from the church so you
will not miss out on important information.



Look for Ushers, First Impression Team Members and Staff wearing Yellow Lanyards to assist you with any questions.

- ❖ Always keep your eyes open to something that looks unusual to you and report it to an usher or staff member immediately.
- ❖ Remember do not leave your valuables in your vehicles.
- ❖ Do not leave your purses, wallets, phones, laptops, weapons in plain sight.
- ❖ **ALL VOLUNTEERS AND STAFF ARE BACKGROUND CHECKED PRIOR TO BEING INVOLVED WITH OUR CHILDREN, YOUTH OR VULNERABLE ADULTS.**

Safe Sanctuary Steering Committee:

Stan Sandlin, Tricia Dille, Billy Jackson, Kenny Culpepper, Karen Hassell

We are a safe sanctuary campus.

Local crisis line: 256-734-6100 if you need help or 911

SJ's Weekly Sunday Worship Schedule

9:00 – Traditional Worship in the Sanctuary without weekly communion

10:10-10:50 – Sunday School – classes for children, youth and adult

11:00 – Modern Worship in Christ Hall with the addition of weekly communion

Thank you for visiting our church
website!

Download the Church Center Ap today!
Registration for events or meals is a breeze with the ap!!



